

BUCKINGHAM MFG.

PN 574 Staple Stick Instructions and Warnings

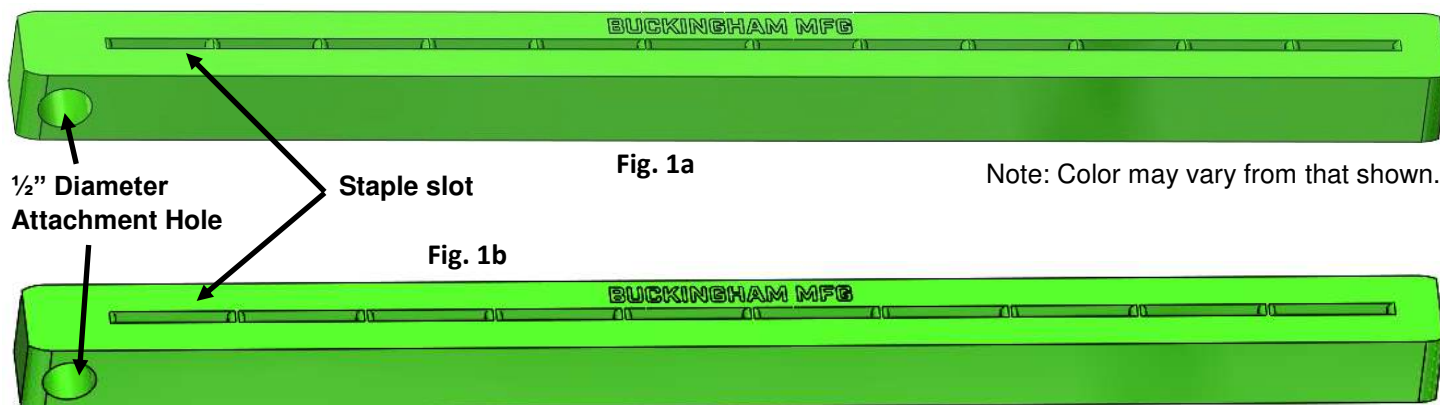


Fig. 1a

Note: Color may vary from that shown.

Fig. 1b

- PN 574 Staple Stick (Fig. 1a) will hold 12 staples of varying diameter (0.140" – 0.150") up to 7/8" wide.
- PN 574L Large Staple Stick (Fig. 1b) will hold 10 staples of varying diameters (0.150" – 0.162") up to 1" wide.
(Recommended minimum staple diameter of 0.140" for PN 574 and 0.150" for PN 574L)

Loading Staples:

1. Align the staple with the slot (Fig. 2)
2. Insert the staple into the slot until the tips are flush with the opposite side (Fig. 3 – 5)
Note: Keeping the staple points inside the slots of the stick help to prevent snags and accidental puncture of equipment and person.

Fig. 2

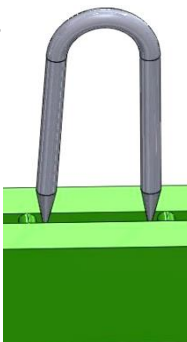


Fig. 3

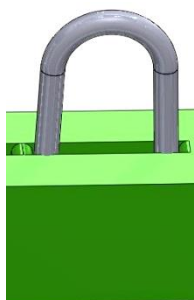
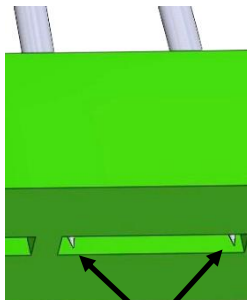
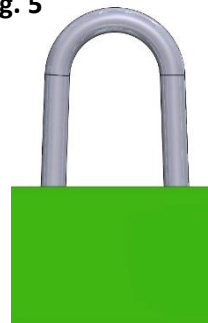


Fig. 4



Tips of staple are flush
with base of stick

Fig. 5



Use:

1. Align the staple over the wire or conduit (Fig. 6).
2. Gripping the stick with your hand and away from the staple being used, strike the staple with the hammer starting it into the pole (Fig. 7).
3. Pull the stick away (leaving the staple in the pole) and continue to hammer staple to desired depth (Fig. 8).

Fig. 6

Wire / Conduit

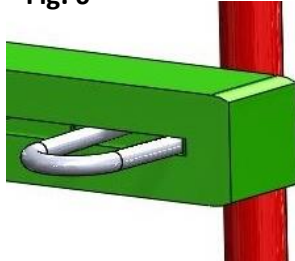


Fig. 7

Grip stick away from
staple being used

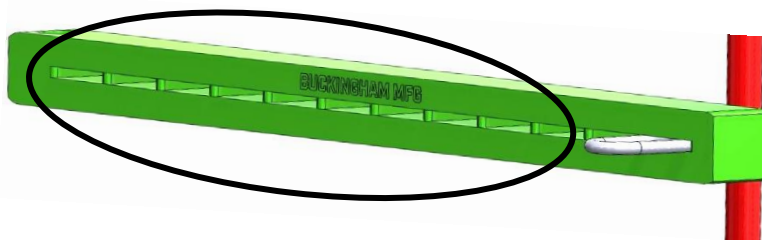


Fig. 8

Wire / Conduit



Pole

Note: Extra staples have been removed for clarity.

Storing the Staple Stick:

The ½" diameter attachment hole located in the end of the staple stick (Fig. 1a and 1b) is designed to allow the stick to be stored on a Buckingham Mfg. PN 2404G handline carrier, PN 2404 BuckTender, insertion of a standard carabiner for attachment to an approved point on a user's Body Belt or Full Body Harness or attachment to a handline hook.

Inspect the Staple Stick for:

- Cracks and tears in the material
- Excessively worn slots

Warnings:

- Know the job and the regulations governing performance requirements and select the proper equipment.
- Read carefully, understand, and heed these and all other included instructions, warnings, and cautions before using this equipment. Failure to do so could result in your serious injury or death.
- This equipment is intended for use by properly trained professionals only.
- Employer – instruct employees as to proper use, warnings, and cautions before use of this equipment.
- The user must wear all personal PPE including but not limited to eye protection, gloves and helmet.
- Allowing the points of the staple to protrude past the base of the staple stick can cause damage to equipment, PPE and personal injury.
- The user must verify the compatibility of the staple they are using with the staple stick. Too small of a diameter staple will not hold in the staple slot and could fall from staple stick while climbing / working.

Cleaning & Storage:

Clean with mild soap & water. Allow to air dry completely (not in sunlight). Your equipment should be stored and transported so that it does not come into contact with moisture, ultra violet rays, extreme temperatures, or chemical agents.

Buckingham Mfg. Co.

Binghamton, NY

www.buckinghammfg.com

1-800-937-2825

Information contained in these written instructions supersedes all other information (written, audio, video etc.) produced by Buckingham Mfg. prior to the revision date of this document.